

Spring Check Valve

Stainless Steel Body | 2-Way Configuration | 1/4" to 3"



Features

- Designed with gravity-assisted or optional spring-loaded return mechanism to achieve rapid valve closure
- Engineered with a centrally guided disc mechanism, ensuring accurate seating and uniform load distribution for improved sealing efficiency
- Optimized for efficient flow lift with controlled cracking pressure, ensuring dependable operation while maintaining tight shut-off characteristics
- Provides a reliable performance in demanding environments, with a wide operating temperature range
- Investment-cast construction using high-quality materials, manufactured in accordance with AD 2000-W0 requirements
- Tested to recognized industry standards to ensure dependable sealing performance and structural integrity
- Supplied with NPT threaded connections for secure, leak-tight installation and compatibility with standard piping systems
- Durable stainless steel construction suited for a wide range of compatible media including water, air, and fuel
- Ideal for vertical pipeline installation, utilizing gravity-assisted closure for rapid response and effective backflow prevention, minimizing reverse flow and potential system damage

Industrial Applications

- Vertical Pump Discharge Lines (compatible media only)
- Boiler Feedwater Vertical Lines
- Condensate Return from High-Pressure Steam System
- Cooling Water Circulation System
- Compressed Air Vertical Risers
- Water Treatment Skids
- Chemical Injection Lines for mild to moderately corrosive media (compatible media only)
- Vertical Pump Discharge in Water Towers
- Fire Sprinkler Risers
- High-Rise Building Water Supply and Booster Systems

*These are not intended for use in medical life support, combustion, aviation, aerospace, automotive or similar applications.

Approvals

- PED 2014/68/EU
- Casting approved AD2000-W0
- Inspection testing: API 598, EN12266-1

Specifications

Pipe Connection		Maximum Operating Pressure	Working Temperature (°F)		Minimum Cracking Pressure (psi)
Size (in)	Thread Connection		Min	Max	
1/4	NPT	1000 WOG	-4	356	5.37
3/8					4.42
1/2					2.64
3/4					1.74
1					1.19
1 1/4					1.1
1 1/2					0.59
2					0.58
2 1/2					0.51
3					0.42
					800 WOG

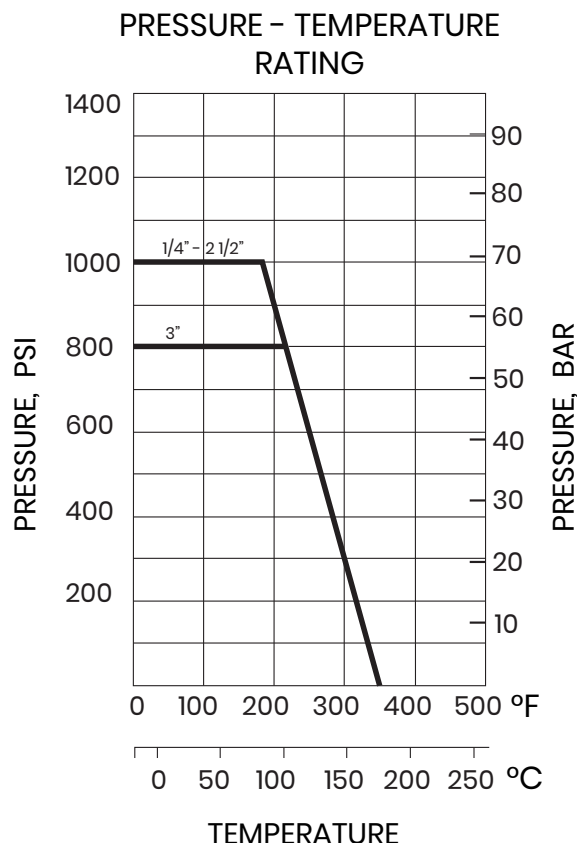
Note: Pressure ratings are for water, oil, and gas (WOG) service under non-shock conditions

Materials of Construction

Valve Parts	Material
Body	Stainless Steel 304
Components	Stainless Steel 304
Trim	Stainless Steel 304
Seal	PTFE

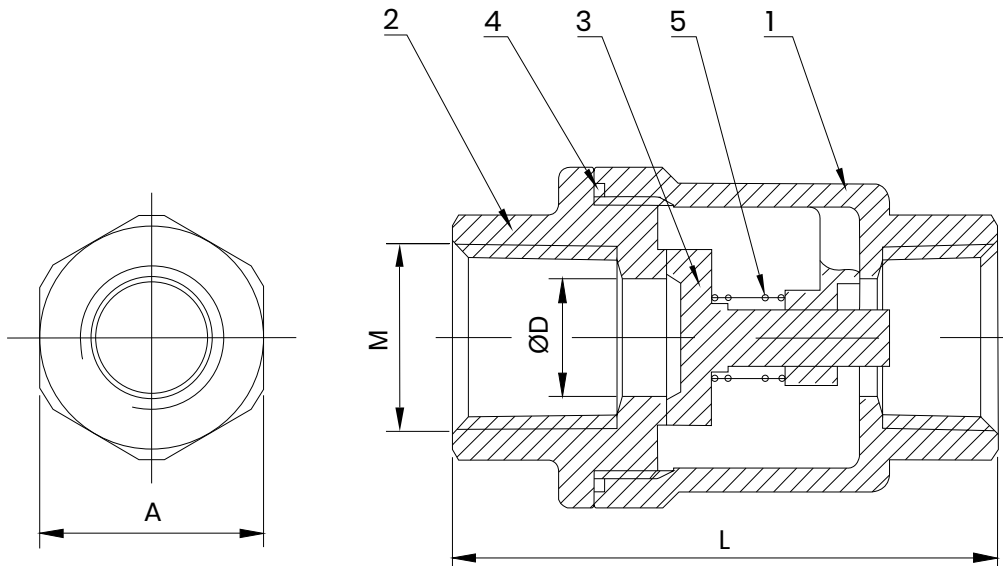
Consult a chemical compatibility expert for correct seal and valve body material choice

Pressure - Temperature Rating



Spring Check Valve

Stainless Steel Body | 2-Way Configuration | 1/4" to 3"



Bill of Materials

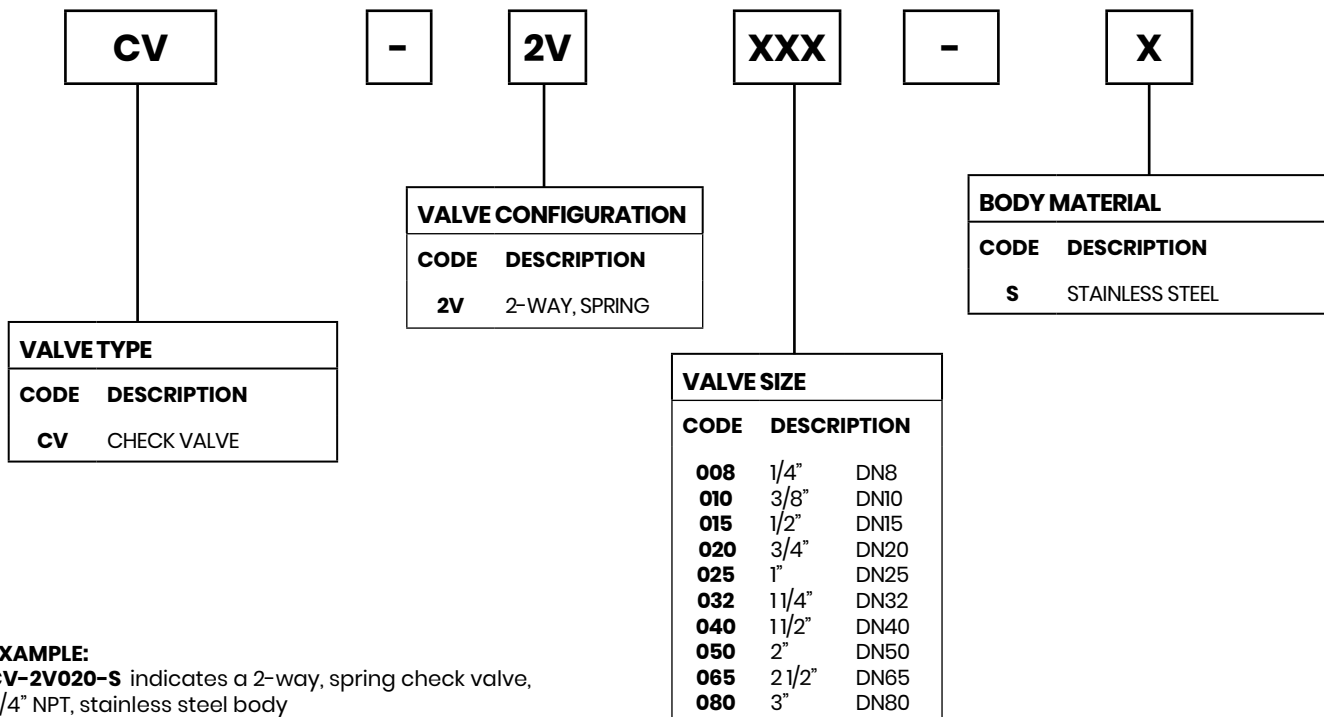
No.	Valve Parts	Material	Qty
1	Body	Stainless Steel 304	1
2	Cap	Stainless Steel 304	1
3	Valve Core	Stainless Steel 304	1
4	End Seal	PTFE	1
5	Spring	Stainless Steel 304	1

Dimension

Pipe Size (in)	Dimension (in)				Weight (lb)
	A	L	ØD	M	
1/4	0.83	2.02	0.39	0.25	0.65
3/8	0.83	2.02	0.43	0.375	1.09
1/2	0.98	2.24	0.59	0.50	0.65
3/4	1.20	2.50	0.79	0.75	1.09
1	1.46	3.02	0.98	1.00	1.65
1 1/4	1.79	3.48	1.26	1.25	2.50
1 1/2	2.07	4.01	1.57	1.50	3.19
2	2.56	4.50	1.97	2.00	5.05
2 1/2	3.21	5.87	2.00	2.50	3.19
3	3.82	6.69	3.15	3.00	5.05

- (1) Weight and dimension may vary slightly from production
- (2) Dimension shown are nominal and provided for reference only
- (3) Dimension tolerance: ± 5% unless otherwise specified

Product Ordering Code



EXAMPLE:
CV-2V020-S indicates a 2-way, spring check valve, 3/4" NPT, stainless steel body