

General Purpose Solenoid Valve

Plastic Body | 2-Way Direct / Semi-Direct Acting | 1/8" to 1/4"



Features

- Provides reliable on/off control for clean water and low-viscosity fluids in low-pressure systems
- Fast-acting response for automatic water shutoff and flow control applications
- Can be mounted vertically or horizontally for flexible installation
- Threaded connection model features a direct-acting solenoid design, allowing stable operation at low or zero differential pressure
- Push-in connection model operates in a semi-direct acting mode and requires minimum differential pressure for reliable operation
- Durable plastic body suitable for water purification, RO systems, and light-duty fluid handling
- Designed for compact, lightweight, and corrosion-resistant system installations
- Suitable for residential, commercial, and light industrial water treatment applications

Materials of Construction

Valve Parts	Material	
	THREADED**	PUSH-IN***
Body	Polypropylene Plastic	POM Plastic
Components	Stainless Steel	
Seal	EPDM	EPDM Diaphragm
Shading Ring	Copper	

*Consult a chemical compatibility expert for correct seal and valve body material choice.
 ** The valve body of the threaded model is threaded at the base and can be mounted using an M5 mounting screw
 ***The push-in connection model includes a built-in filter screen to prevent debris from entering the valve chamber and affecting proper operation. The bottom mounting legs can be secured using 4 mm machine screws.

Electrical Data

Pipe Size (in)	Power Rating (Holding)				Coil Connection	Coil Class	Protection Class
	AC, 60 Hz VA		DC Watts				
	24V	120V	12V	24V			
THREADED							
1/8	(1)	7	5.5	(1)	Lead Wires	B	IP 54
1/4	7		5.5				
PUSH-IN							
1/4	6	5	5		Terminal	B	IP 54

- (1) 24V AC and 24V DC are not offered for this size
- (2) Valves are designed to be normally closed (NC)
- (3) Valves are suitable for continuous energization (100% duty cycle) within rated voltage and ambient temperature limits
- (4) AC power ratings shown represent steady state (Holding) VA at rated voltage, 50/60 Hz, and 40 °C (104 °F) ambient temperature
- (5) Electrical values are nominal with a tolerance of ±10 % unless otherwise specified

Industrial Applications

- Humidification and Misting Systems
- Water Treatment and Filtration Systems
- Ice Production Equipment
- Drinking Water Dispensers and Fountains
- Aquaculture and Aquarium Systems
- Commercial Dishwashing Equipment
- Beverage Processing and Dispensing Systems
- Industrial Cleaning and Washdown Systems
- Hydroponic Cultivation Systems
- Laundry Appliances
- Dental Equipment

*These are not intended for use in medical life support, combustion, aviation, aerospace, automotive or similar applications

Approvals

- CE compliant for EMC in accordance with: EN 55014-1, EN 55014-2, EN 61000-3-2, EN 61000-3-3
- FDA compliant for food and drinking water contact in accordance with 21 CFR 177.2470, 21 CFR 177.1520, 21 CFR 175.300, and 21 CFR 177.2600

Specifications

Size (in)	Port Connection	Orifice (mm)	Flow Coefficient Value Cv	Flow Rate GPM @60 PSI	Operating Pressure (psi)				Operating Temperature (°F)		
					Min	Max				Min	Max
						AC		DC			
						24V	120V	12V	24V		
THREADED											
1/8	NPT - Female	2.5	0.2	1.5	0	(a)	115	115	(a)	25	212
1/4	NPT - Female	2.5	0.2	1.5	0	115		115		25	212
PUSH-IN											
1/4	Quick Connect	2.0	0.2	1.5	3	115		115		25	175

- (a) 24V AC and 24V DC are not offered for this size
- (b) Valves are designed to be normally closed (NC)
- (c) For threaded model, the valve operates in direct-acting mode, allowing operation from 0 psi differential pressure
- (d) For push-in model, the valve operates in a semi-direct acting mode, requiring a minimum differential pressure of 3 psi for reliable operation
- (e) This valve may not be suitable for gravity-fed applications due to its small orifice size

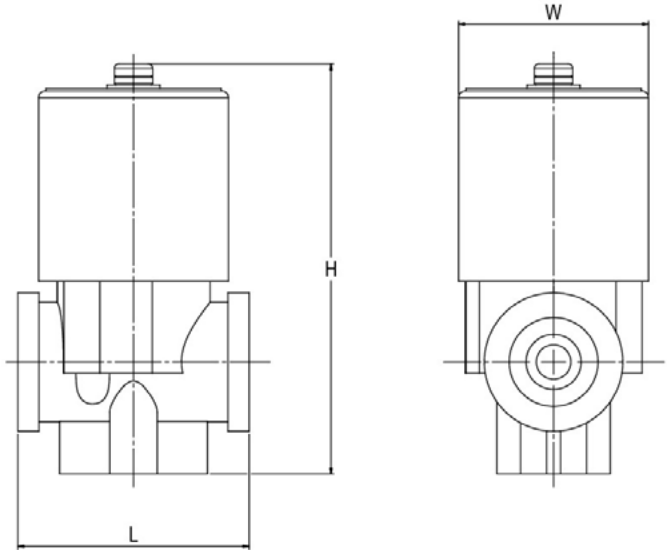
General Purpose Solenoid Valve

Plastic Body | 2-Way Direct / Semi-Direct Acting | 1/8" to 1/4"

Dimension: Threaded Model

Pipe Size (in)	Dimension (in)			Weight (lb)
	H	L	W	
1/8	2.44	2.53	1.24	0.29
1/4	2.44	2.53	1.24	0.29

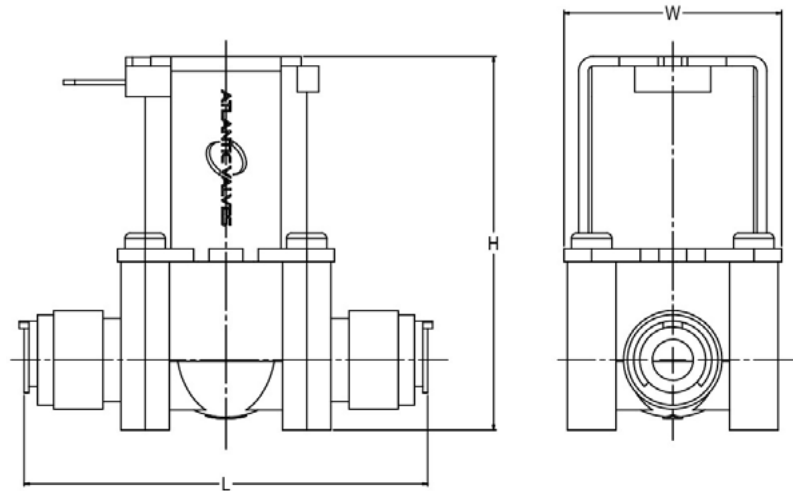
- (1) Weight and dimension may vary slightly from production
- (2) Dimension shown are nominal and provided for reference only
- (3) Dimension tolerance: ± 5% unless otherwise specified
- (4) H = Overall Height, L = Port to Port Length, W = Overall Width



Dimension: Push-in Model

Pipe Size (in)	Dimension (in)			Weight (lb)
	H	L	W	
1/4	2.30	2.50	1.34	0.25

- (1) Weight and dimension may vary slightly from production
- (2) Dimension shown are nominal and provided for reference only
- (3) Dimension tolerance: ± 5% unless otherwise specified
- (4) H = Overall Height, L = Port to Port Length, W = Overall Width



Product Ordering Code

RSC	-	X	X	X	-	X	X
------------	---	----------	----------	----------	---	----------	----------

VALVE SERIES

CODE	DESCRIPTION
RSC	PLASTIC SOLENOID VALVE SERIES

SIZE

CODE	DESCRIPTION
1	1/8" (DN6)
2	1/4" (DN8)

VOLTAGE USED

CODE	DESCRIPTION
12V	12V
24V	24V
120V	120V

VALVE MODEL

CODE	DESCRIPTION
(BLANK)	THREADED
A	PUSH-IN

VALVE TYPE

CODE	DESCRIPTION
(BLANK)	NORMALLY CLOSED (NC)

TYPE OF CURRENT

CODE	DESCRIPTION
AC	ALTERNATING CURRENT
DC	DIRECT CURRENT

EXAMPLE:

RSC-1-120VAC indicates a polypropylene plastic body, threaded RSC series valve with a 1/8" NPT-Female connection, normally closed configuration, and with 120V AC coil