

Pilot Operated Solenoid Valve

Brass Body | 2-Way Configuration | 1/2" to 2"



Features

- Provides reliable on/off control for low viscosity and non-corrosive liquids and gases
- Fast response time for precise and efficient fluid control
- Pilot-operated design enables reliable performance in applications with higher flow demand and adequate system pressure
- Can be mounted in vertical or horizontal orientation
- Durable brass construction suited for a wide range of compatible media including water, air, and light oil
- Engineered for durability and long service life under frequent switching conditions
- Ideal for water and utility systems requiring continuous flow during power loss
- UL Recognized coil system designed to meet established electrical safety standards for industrial control components
- Suitable for integration into UL-compliant control panels, automation systems, and equipment assemblies.
- Ideal for industrial automation systems, skid-mounted equipment, OEM machinery, utility services, and general fluid control applications

Materials of Construction

Valve Parts	Material
Body	Brass
Components	Stainless Steel
Seal	NBR
Shading Ring	Copper

Consult a chemical compatibility expert for correct seal and valve body material choice

Industrial Applications

- Compressed Air Distribution System
- Boiler Feedwater and Auxilliary Water Isolation
- Recirculation Loops for Process Fluids
- Water Treatment and Filtration Equipment
- Cooling Tower Water Control
- Process Water Distribution
- Fluid Handling Systems in OEM Machinery
- Skid-Mounted Process Equipment and Control Systems
- Industrial Water Supply and Utility Water Lines
- Industrial Water Recirculation Systems
- Process Utility Control in Automated Production Lines

*These are not intended for use in medical life support, combustion, aviation, aerospace, automotive or similar applications.

Approvals

- CE EMC Certified (EN 61000-6-3:2007+A1:2011 and EN 61000-6-1:2007)
- UL Recognized Component (UR) – Electrically Operated Valve Parts, evaluated to UL 429 (Certificate No. MH66864)

Electrical Data

Pipe Size (in)	Power Rating (Holding)				Coil Connection		Protection Class	
	AC, 60 Hz VA			DC Watts	NC	NO	NC	NO
	24V	110V	220V	12V				
1/2	21	22	23	18	DIN 43650A ²		IP 65	
3/4	21	22	23	18				
1	21	22	23	18				
1 1/2	21	22	23	18				
2	21	22	23	18				

(1) NC - Normally Closed; NO - Normally Open

(2) Coil Class: H (356 °F)

(3) Valves are suitable for continuous energization (100% duty cycle) within rated voltage and ambient temperature limits

(4) AC power ratings shown represent steady state (Holding) VA at rated voltage, 50/60 Hz, and 40 °C (104 °F) ambient temperature.

(5) Electrical values are nominal with a tolerance of ±10 % unless otherwise specified

Specifications

Pipe Connection		Orifice (mm)	Flow Coefficient Value Cv	Flow Rate GPM @60 PSI	Min	Operating Pressure (psi)					Operating Temperature (°F)	
						Max						
Size (in)	Thread Connection					AC			DC		Min	Max
						24V	110V	220V	12V	24V		
NORMALLY CLOSED (NC)												
1/2	NPT - Female	13	13.0	100.0	4.5	230			230		15	175
3/4	NPT - Female	20	20.0	150.0	4.5	230			230		15	175
1	NPT - Female	25	25.0	190.0	4.5	230			230		15	175
1 1/2	NPT - Female	40	40.0	310.0	4.5	230			230		15	175
2	NPT - Female	50	50.0	380.0	4.5	230			230		15	175
NORMALLY OPEN (NO)												
1/2	NPT - Female	13	13.0	100.0	4.5	115			85		15	175
3/4	NPT - Female	20	20.0	150.0	4.5	115			85		15	175
1	NPT - Female	25	25.0	190.0	4.5	115			85		15	175
1 1/2	NPT - Female	40	40.0	310.0	4.5	115			85		15	175
2	NPT - Female	50	50.0	380.0	4.5	115			85		15	175

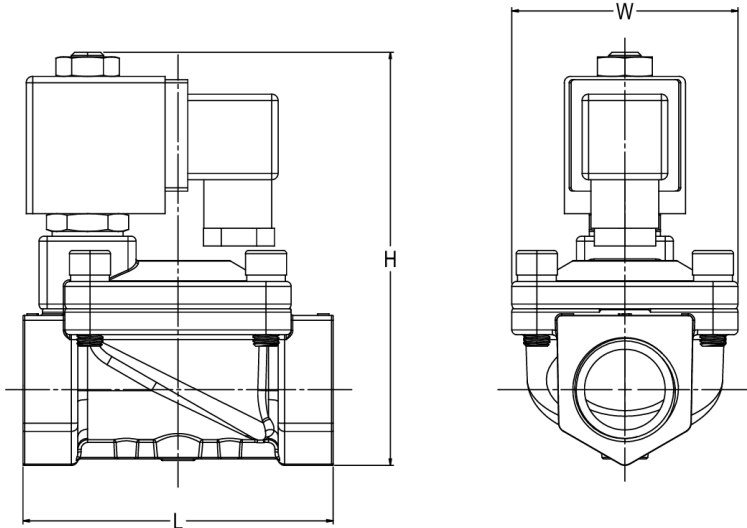
*Valve requires a minimum differential pressure of 4.5 psi for reliable operation

**Maintain consistent system pressure in high-elevation or low-head installations; not suitable for gravity-fed systems

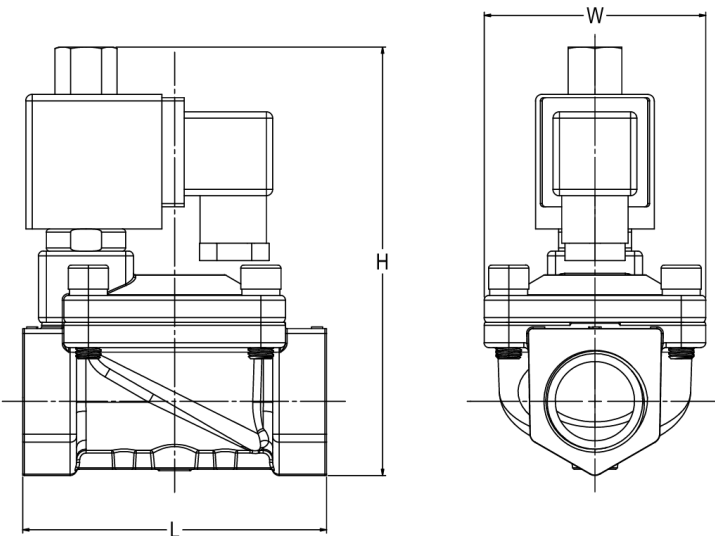
Pilot Operated Solenoid Valve

Brass Body | 2-Way Configuration | 1/2" to 2"

Normally Closed (NC) Configuration



Normally Open (NO) Configuration



Dimension

Pipe Size (in)	Dimension (in)			Weight (lb)
	H	L	W	
NORMALLY CLOSED (NC)				
1/2	4.80	2.60	1.89	1.63
3/4	4.65	2.95	2.28	1.94
1	4.92	3.75	2.72	3.04
1 1/2	5.91	5.16	3.78	5.84
2	6.50	6.50	4.72	8.61
NORMALLY OPEN (NO)				
1/2	4.80	2.60	1.89	1.76
3/4	5.04	2.95	2.28	2.65
1	5.31	3.78	2.72	3.31
1 1/2	6.30	5.16	3.78	6.61
2	6.89	6.50	4.72	8.82

- (1) Weight and dimension may vary slightly from production
- (2) Dimension shown are nominal and provided for reference only
- (3) Dimension tolerance: ± 5% unless otherwise specified
- (4) H = Overall Height, L = Port to Port Length, W = Overall Width

Product Ordering Code

UBP	-	X	X	-	X	X																																						
<p>VALVE SERIES</p> <table border="1" style="width: 100%; border-collapse: collapse;"> <thead> <tr> <th>CODE</th> <th>DESCRIPTION</th> </tr> </thead> <tbody> <tr> <td>UBP</td> <td>UL RECOGNIZED, BRASS BODY, PILOT OPERATED SOLENOID VALVE</td> </tr> </tbody> </table>	CODE	DESCRIPTION	UBP	UL RECOGNIZED, BRASS BODY, PILOT OPERATED SOLENOID VALVE		<p>PIPE SIZE</p> <table border="1" style="width: 100%; border-collapse: collapse;"> <thead> <tr> <th>CODE</th> <th>DESCRIPTION</th> </tr> </thead> <tbody> <tr> <td>15</td> <td>1/2" (DN15)</td> </tr> <tr> <td>20</td> <td>3/4" (DN20)</td> </tr> <tr> <td>25</td> <td>1" (DN25)</td> </tr> <tr> <td>40</td> <td>1 1/2" (DN40)</td> </tr> <tr> <td>50</td> <td>2" (DN50)</td> </tr> </tbody> </table>	CODE	DESCRIPTION	15	1/2" (DN15)	20	3/4" (DN20)	25	1" (DN25)	40	1 1/2" (DN40)	50	2" (DN50)	<p>VALVE TYPE</p> <table border="1" style="width: 100%; border-collapse: collapse;"> <thead> <tr> <th>CODE</th> <th>DESCRIPTION</th> </tr> </thead> <tbody> <tr> <td>K</td> <td>NORMALLY OPEN (NO)</td> </tr> <tr> <td>(BLANK)</td> <td>NORMALLY CLOSED (NC)</td> </tr> </tbody> </table>	CODE	DESCRIPTION	K	NORMALLY OPEN (NO)	(BLANK)	NORMALLY CLOSED (NC)		<p>VOLTAGE USED</p> <table border="1" style="width: 100%; border-collapse: collapse;"> <thead> <tr> <th>CODE</th> <th>DESCRIPTION</th> </tr> </thead> <tbody> <tr> <td>12V</td> <td>12V</td> </tr> <tr> <td>24V</td> <td>24V</td> </tr> <tr> <td>110V</td> <td>110V</td> </tr> <tr> <td>220V</td> <td>220V</td> </tr> </tbody> </table>	CODE	DESCRIPTION	12V	12V	24V	24V	110V	110V	220V	220V	<p>TYPE OF CURRENT</p> <table border="1" style="width: 100%; border-collapse: collapse;"> <thead> <tr> <th>CODE</th> <th>DESCRIPTION</th> </tr> </thead> <tbody> <tr> <td>AC</td> <td>ALTERNATING CURRENT</td> </tr> <tr> <td>DC</td> <td>DIRECT CURRENT</td> </tr> </tbody> </table>	CODE	DESCRIPTION	AC	ALTERNATING CURRENT	DC	DIRECT CURRENT
CODE	DESCRIPTION																																											
UBP	UL RECOGNIZED, BRASS BODY, PILOT OPERATED SOLENOID VALVE																																											
CODE	DESCRIPTION																																											
15	1/2" (DN15)																																											
20	3/4" (DN20)																																											
25	1" (DN25)																																											
40	1 1/2" (DN40)																																											
50	2" (DN50)																																											
CODE	DESCRIPTION																																											
K	NORMALLY OPEN (NO)																																											
(BLANK)	NORMALLY CLOSED (NC)																																											
CODE	DESCRIPTION																																											
12V	12V																																											
24V	24V																																											
110V	110V																																											
220V	220V																																											
CODE	DESCRIPTION																																											
AC	ALTERNATING CURRENT																																											
DC	DIRECT CURRENT																																											

EXAMPLE:

UBP-15K-110VAC indicates a UL Recognized brass body, pilot operated solenoid valve, 1/2" NPT-Female, normally open configuration with 110V AC coil